

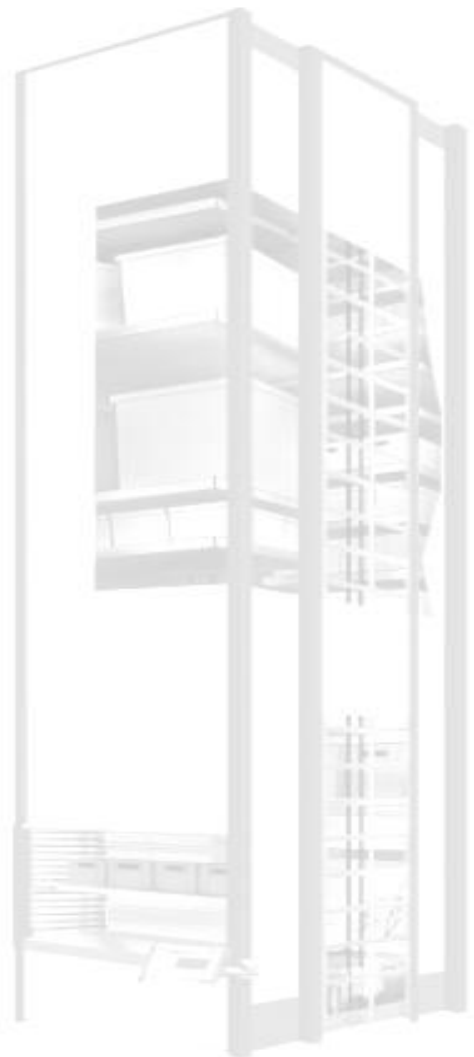
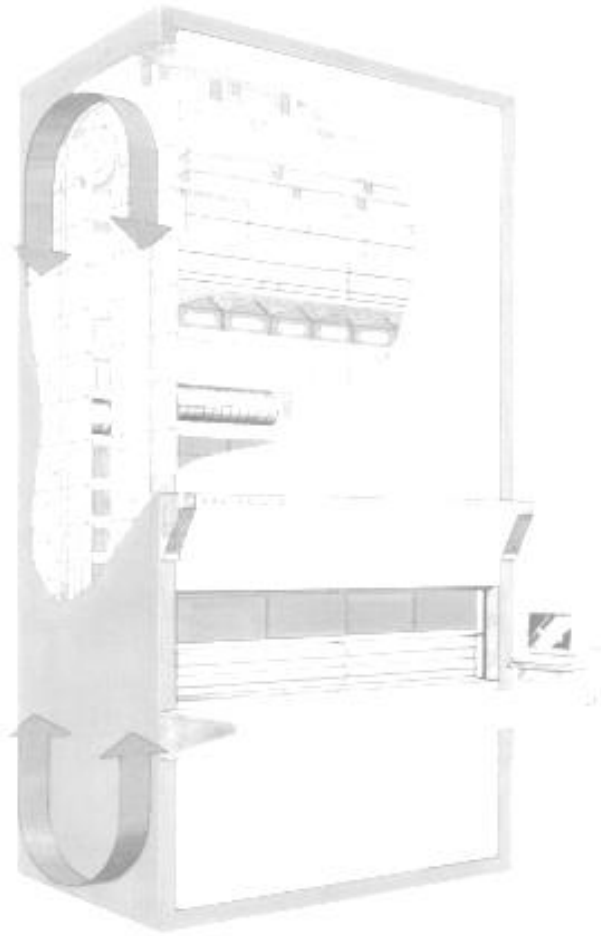
kardexremstar



F i l e H a n d l e r

U S E R G U I D E

Issue Date: April 2017



Kardex VCA Pty Ltd
PO BOX 1082
Wodonga VIC 3689
Australia

P: +61 2 6056 1202
E: support@kardex.com.au
W: www.kardex.com.au

Table of Contents

1	Introduction	1
2	Installation	1
3	Set up	3
3.1	Directory Structure	3
3.2	Configuration	3
3.2.1	Process Settings	4
3.2.2	Add Action	5
3.2.3	Edit Action	6
3.2.4	Delete Action	6
3.2.5	Move an Entry	7
3.2.6	Duplicate an Entry	7
4	Operation	7
5	Trouble Shooting	8

Valid for File Handler version 2.0.10.2015

IMPORTANT NOTICE

This software is made available for use under the terms of your 'Software Licence Agreement'.

For new equipment installations Kardex VCA Vertical Storage System software is configured by our staff and operation of the equipment (Carousel / Vertical Lift / SortBench) and software is confirmed as part of the commissioning process.

The software warranty will be void if the Customer or their representative changes modifies or makes any additions to the hardware and/or software of the Vertical Storage System without the written permission of Kardex VCA Pty Ltd (Kardex). Kardex will not withhold that permission if the changes will have no material effect on the system operation or performance.

The **Customer** is responsible for the maintenance of all **system** and **data files** including backup and restoration procedures.

1 Introduction

Kardex has developed a file transfer utility called 'File Handler', which moves, copies or deletes files from a source directory to a destination directory on a timer interval basis.

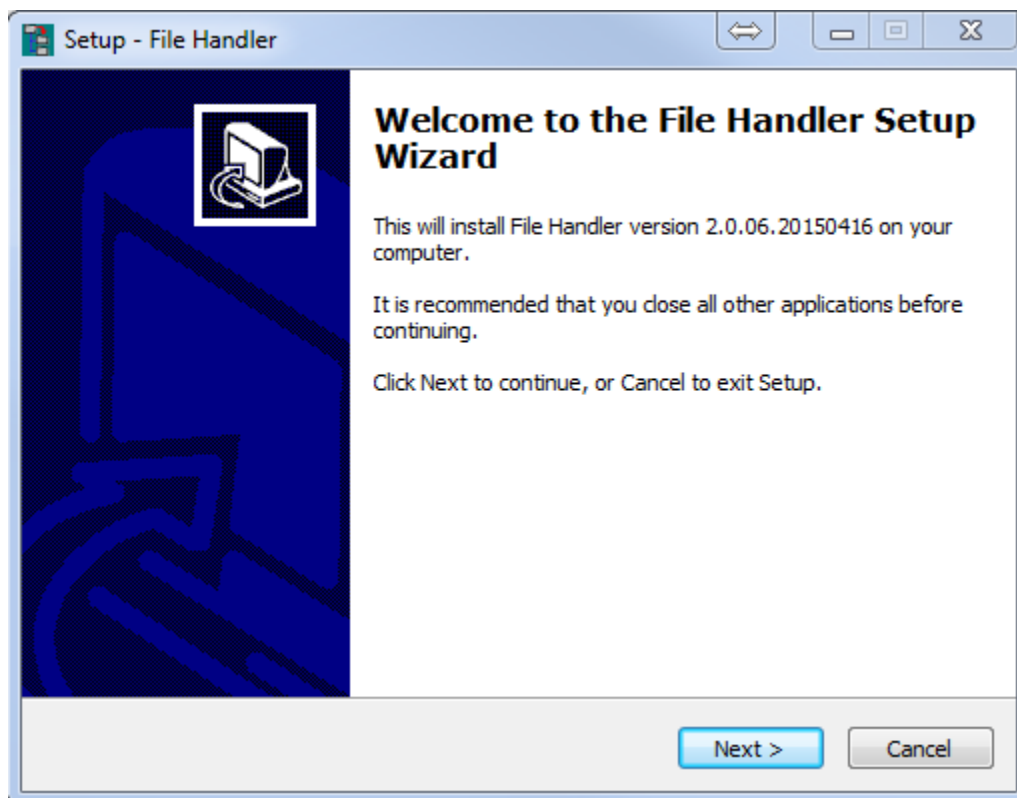
File Handler (**FH**) has been developed for use with our KardexIS application suite the primarily for the transfer of KARMAN and RACKMAN list files from a Host computer to a Database Server, SortBench PC or a Vertical Storage Unit console or vice versa.

File Handler utility is a 32-bit Windows application, which can be run from the Startup folder on the respective device or from a desktop ICON.

2 Installation

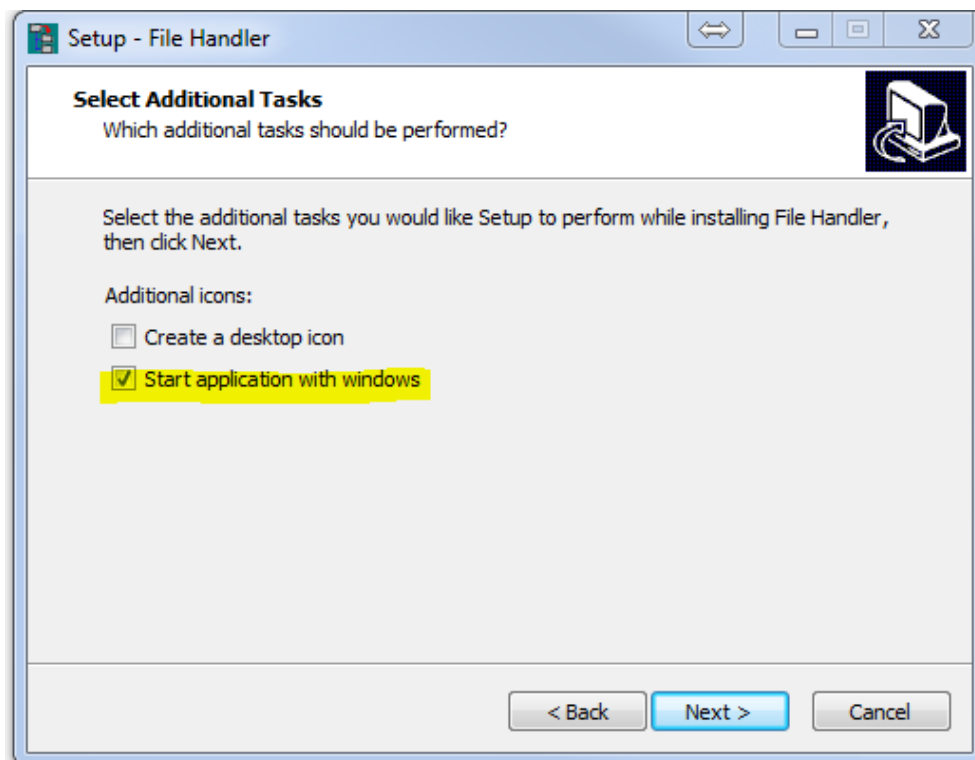
FH will be delivered via download, email or on CD. Install the FH utility using the Run dialog available from the Windows Start Menu. Click on Browse button and browse to 'File Handler Setup.exe'.

Click OK to commence the installation. The following screen will display:



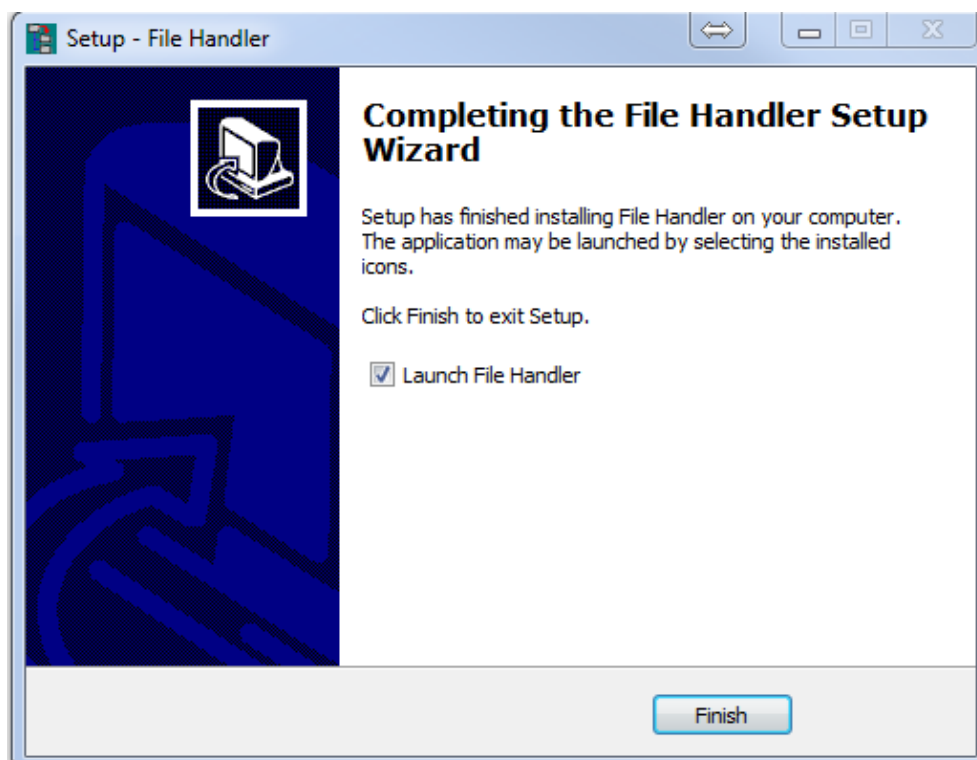
Click Next to continue with installation.

The following form will be displayed:



You should set the 'Start ..' check box as a minimum. Click Next to continue with installation.

Follow the dialogue until the installation has completed. Click Finish to Launch or complete the installation.



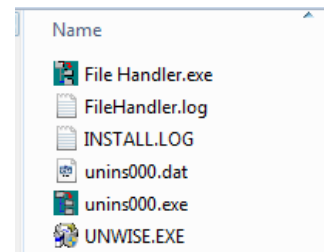
3 Set up

3.1 Directory Structure

The setup program creates the following directory and adds the notes files to the directory:

C:\Program Files(x86)\Kardex VCA\File Handler\

- File Handler.exe Executable file
- INSTALL.LOG Installation Log
- UNINS000.EXE Uninstaller Program
- FileHandler.log Default log file

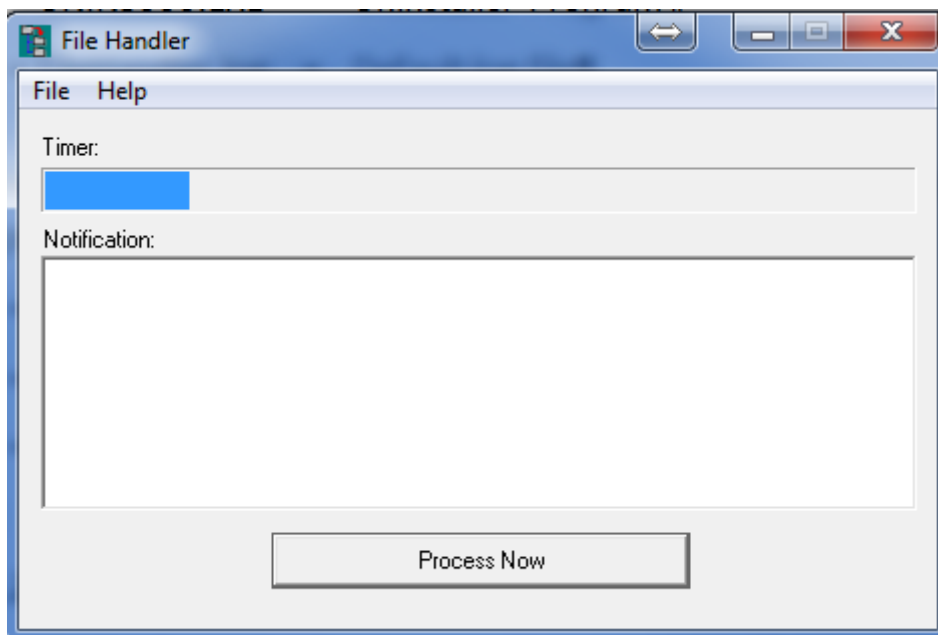


File Handler should be set to start when Windows starts to ensure it is always operational. It can be run from the following shortcuts:

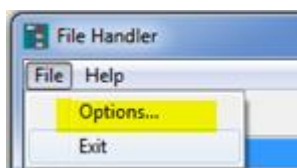
- C:\Windows\Desktop\
- C:\Windows\StartMenu\All Programs\Kardex VCA\
- C:\Windows\StartMenu\All Programs\Startup\

3.2 Configuration

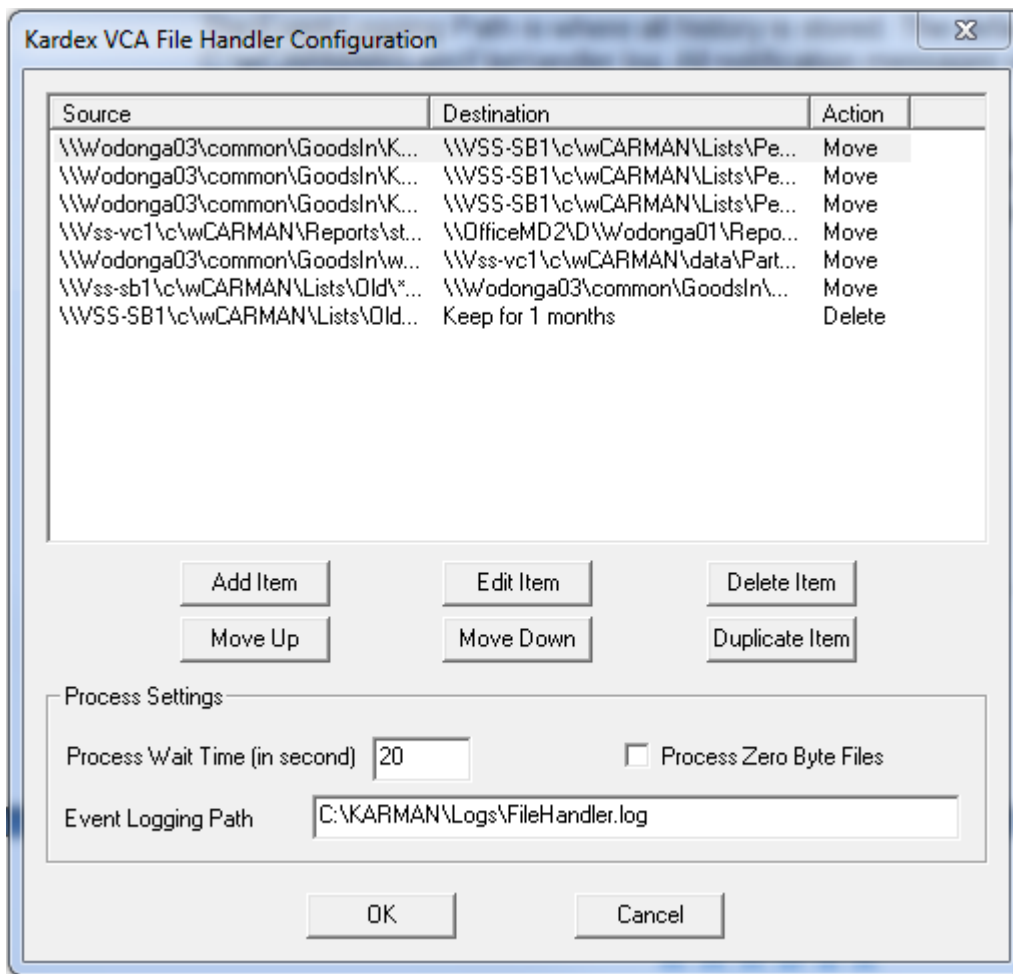
Run FH by from the Desktop or Startup ICON. The application main form has the following appearance:



The timer provides an initial opportunity to access the Options menu so the actions and paths can be set up.



Click on the File\Options menu item to access the Configuration form:

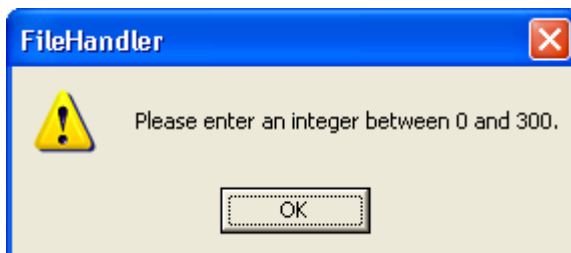


3.2.1 Process Settings

The Event Logging Path points to the log file where all history is stored. The default file name is FileHanlder.log and the default location is C:\KARMAN\Logs\FileHandler.log. All notification messages will be written to this log file.

The 'Process Wait Time' is the time interval between file searches. The default value is 20 seconds.

To change the interval, click in the box and enter the new value or from the keyboard, **Tab** to this box and enter the new value. The interval must be between 0 and 300 or the following message will appear:



By default FH will not process zero byte files. If your process requires this handling, check the box.

3.2.2 Add Action

a) Untagged

To Add a new Action click on the Add Item button in the Configuration screen. This will bring up the 'Add/Edit item' screen:

The 'Add/Edit Item' dialog box has a blue title bar with a close button. It contains two text input fields: 'Source (e.g. C:\Input*.gpk)' with the value 'c:\input*.gpk' and 'Destination (e.g. C:\Output*.gpk)' with the value 'c:\output*.gpk'. Below these is an 'Action' dropdown menu currently showing 'Copy', and a 'Keep for' field with '0' and a 'months' label. At the bottom are 'OK' and 'Cancel' buttons.

- Add the Source designation *including folder and filename*. Wildcards can be used.
- Add the Destination designation *including folder and filename*. Wildcards can be used.
- Choose the Action you want File Handler to perform for the described files. Three actions are possible:
 - Copy
File Handler will 'copy' the required files from the source folder to the destination folder i.e. the original file will be retained in the source folder. If File Handler cannot complete this operation, a message will be displayed in the notification window on the main form.
 - Move
File Handler will 'move' the required files from the source folder to the destination folder i.e. the original file will be deleted from the source folder. If File Handler cannot complete this operation, a message will be displayed in the notification window on the main form.
 - Delete
File Handler can 'delete' the required files from the source folder immediately the files are created. The 'Destination' field will be greyed out.

Using the Delete action, you can also specify to retain the files for a period of months. If the period is set to zero, the files are deleted immediately otherwise the files are only deleted after the time period has elapsed.

The 'Add/Edit Item' dialog box shows the 'Source' field with 'c:\wCARMAN\Lists\Old*.gpk'. The 'Destination' field is disabled (greyed out). The 'Action' dropdown is now set to 'Delete', and the 'Keep for' field is set to '1' months. The 'OK' and 'Cancel' buttons remain at the bottom.

This function can be useful for 'housekeeping' purposes.

b) Date/Time Tag

It is possible to add a date/time tag to a filename as it is sent to the destination folder. The tag is appended by adding a suffix construct in the definition of the destination field.

An example of a destination string with date/time tag is given below:

Source String:

C:\KARMAN\LISTS\OLD\SO???????.GPK

Destination String:

H:\KARMAN\LISTS\OLD\SO???????._%Y%m%d_%H%M%s_%n.GPK

Where the codes are used as follows:

Day Code	Example	Time Code	
%Y: Year	2015	%H: Hour	14
%m: Month	06	%M: Minute	15
%d: day	12	%S: Second	30
		%n: millisecond	015

Source Example:

C:\KARMAN\LISTS\OLD\SO12345678.GPK

Destination String:

H:\KARMAN\LISTS\OLD\SO12345678_20150612_141530_015.GPK

NOTE: Where pattern matching is to be used the filename structure must be consistent.

3.2.3 Edit Action

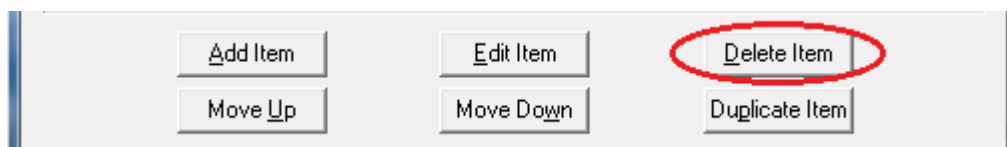
To Edit an action select the item in the Configuration window and the click the Edit button:



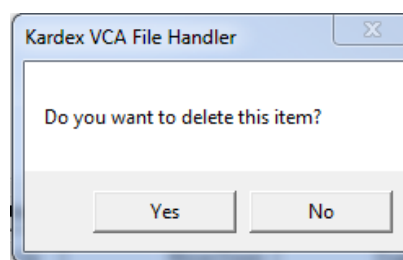
Edit the Source, Destination, Action as described under 'Add' above.

3.2.4 Delete Action

To Delete an action select the item in the Configuration window and the click the Delete button:



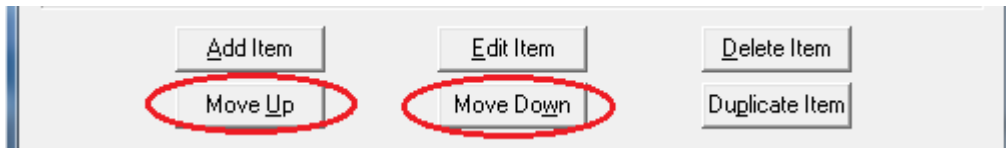
You will be asked to confirm your action, so respond accordingly:



3.2.5 Move an Entry

The order the entries appear in the Configuration window is the order the actions are executed.

If you want to change the execution order or duplicate an entry, select the item and then click on the respective command button:



- **Move Up**

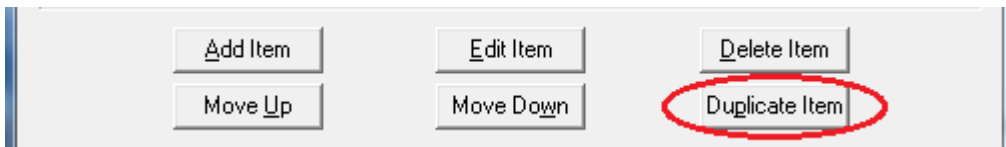
To move an entry up the execution order, select it and then click Move Up.

- **Move Down**

To move an entry down the execution order, select it and then click Move Down.

3.2.6 Duplicate an Entry

To duplicate an entry in the Configuration window select it and then click Duplicate Item.



Don't forget to edit the settings.

4 Operation

File Handler is a fundamental part of the operation of our Vertical Storage Systems (VSS) and its operation should be secure.

Kardex uses **FH** as the means to transfer host picking and replenishment transaction files to the VSS and it is also our mechanism to return information to the host. If **FH** is not operating you can be sure the VSS will stop as no pick files will be presented to the system for action.

FH does not require intervention during normal operation as it sits in the task bar on the respective device.

FH should be used to handle the following VSS files:

- Inventory & location maintenance files such as PART.DAT and LOCS.DAT
- Place and Pick host and VSS resultant files
- VSS Reports
- VSS Data and registry back up files

5 Trouble Shooting

If you encounter problems in the use of this application, please contact Kardex for support as follows:

Kardex Customer Service

Wodonga Office Australia

Phone: +61 2 6056 5173

Fax: +61 2 6056 2422

Email: support@kardex.com.au

Please quote your 'Site ID' code to assist us to find your site details. Your site code is listed on the site software license or your service agreement document.